



Neglected Tropical Diseases (NTDs) Integration in Rwanda

Ladislav Nshimiyimana
Acting Director of NTDs & Other Parasitic Diseases Unit
Rwanda Biomedical Centre
Ministry of Health

July 2025



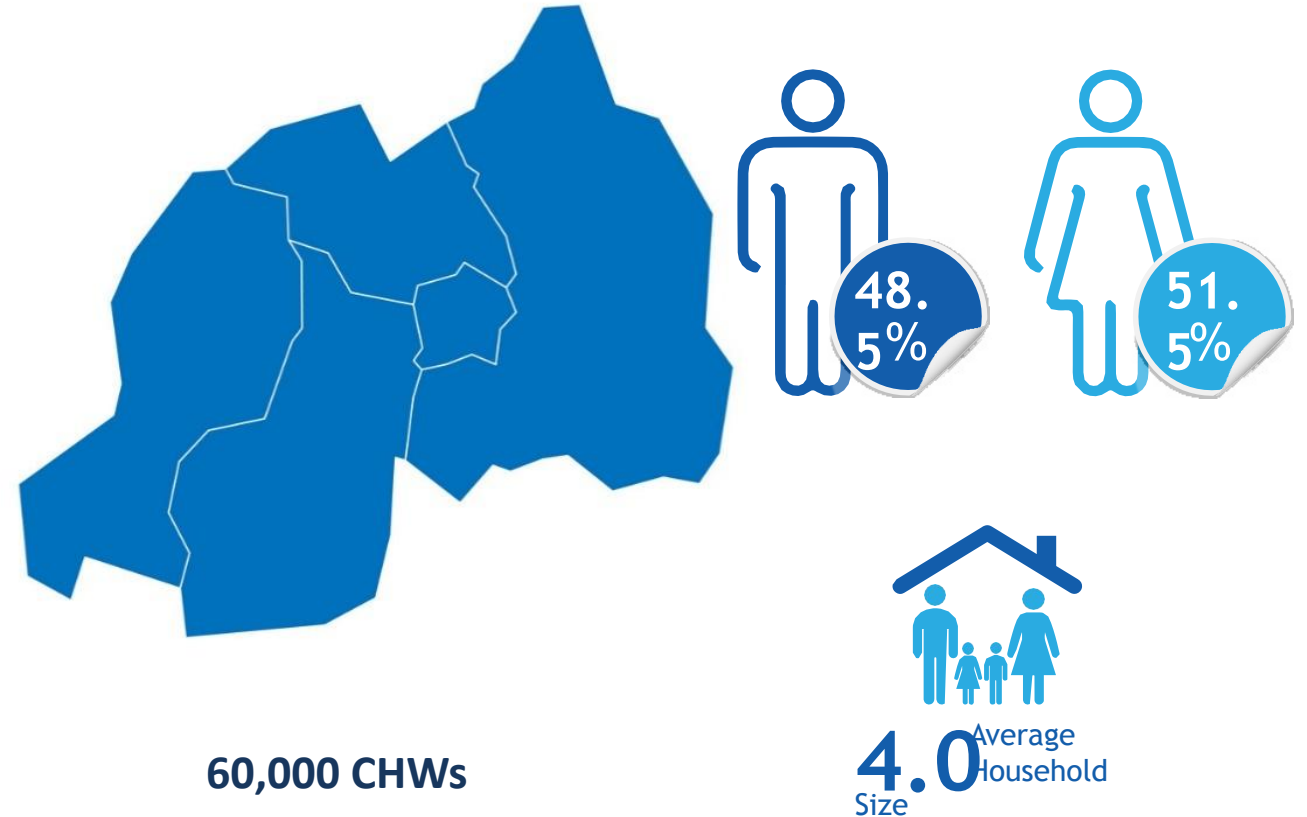
Country Profile



dreamstime.com

ID 119559661 © Kerdazz

Population: 13,246,394



Source: 5th Rwanda Population and Housing Census, 2022



MDA implementation and NTD Data Integration in HMIS

Rwanda HMIS

mera (Gasabo) CS

Data Entry ?

Organisation Unit: Remera (Gasabo) CS

Data Set: [Select data set]

Period:

- Other Cardiovascular and Kidney diseases
- OutPatient Consultations (OPD)
- Population
- Postnatal care
- SISCOM-HC-01 Summary_Population and reporters
- SISCOM-HC-02 Treatments and RDTs
- SISCOM-HC-03 Nutrition and Immunization
- SISCOM-HC-04 Maternal and Newborn Health

Integrated Maternal and Child Health Campaign

Abateganyijwe guhabwa serivisi n'abazihawe

Filter in section	6-11 MONTHS	12-59 MONTHS	5-15 years	16+YEARS
Umubare w'abateganyijwe guhabwa ibinini by'inzoka cyangwa Vit A				
Umubare w'abahawe Igitonyanga cya Vitamini A				
Umubare w'abahawe Ikinini cya Mebendazole cg Albendazole				
Umubare w'abateganyijwe guhabwa Ikinini cya Praziquantel				
Umubare w'abahawe Ikinini cya Praziquantel				
Umubare w'abagize Ingaruka z'imiti Mebendazole, Albendazole				
Umubare w'abagize Ingaruka z'imiti Praziquantel + Albendazole/ Mebendazole				
Umubare w'abagize Ingaruka z'imiti Vit A +Mebendazole /Albendazole				
Umubare w'abahawe Inyigisho ku Ishuri				
Umubare w'abahawe Inyigisho ahandi				
Umubare w'abahawe Inyigisho mu Mudugudu				

Prevent Malaria

8 Contacts (ANC)

Delivery at Health Facility

Family Planning

Exclusive Breast Feeding for 6 Months

Full Vaccination

Malnutrition Screening

WASH and MDA for STH/SCH



MCH Week Campaign

Implementation Arrangement



Community-School-Health Facilities



Ongoing integration STH & SCH deworming in routing CHWs

E-Buzima Kicukiro_1

MDA Campaign

Campaign Info

Name: CHW Training Jan
Start Date: Jan 09, 2024
End Date: Jan 18, 2024
Target: Dis_Schistosomiasis
Treatment: Praziquantel_Tab
Target Groups: 16y+
5-15y

Distribution Efforts

Public House-to-house School

Your Contacts

Health Center: Bethesda



Home

Other Health Services



Indoor Residual Spraying



LLIN Distribution



Mass Drug Administration



PRODUCT	IN STOCK
Albendazole	0
Ivermectin	0
Mebendazole	0
Praziquantel	0

Key Features-CHWs services package:

- Household Registration
- Campaigns (IRS, ITNs, MDA,..)
- i-CCM
- Fever Management
- Individualized Drug Administration
- Dashboard for M&E
- MDA Drug Stock Management
- Etc.



Integrated Vector Management Snails-Mosquitoes-Flies



**The same entomologists are training in
Snail, Mosquitoes, and Black flies
Management**



Integrated Skin NTDs Screening, Referral and Management

INDWARA Z'URUHU ZITITAWeho UKO BIKWIYE- ZIGOMBA KURANDURWA MU RWANDA

Izina ry'indwara	Uburyo bwa mbere indwara igaragaramo (1)	Uburyo bwa bwa kabiri indwara igaragaramo (2)	Uburyo bwa bwa gatatu indwara igaragaramo (3)	Ibindi wayimenyaho (4)
Imidido yatewe n'ubutaka	Amaguru yombi arabyimba (n'ubwo ashobora kubyimba mu buryo butangana)	Kugira uduturuguny ku kirenge n'amano	Umuntu ashobora kugira igisebe cy'umufunzo	Urwaye akunze kwishimigura kubera kokerwa
Imidido yakwirakwije n'umubu	Bakunze kubyimba ikirenge kimwe	Kubyimba imyanya ndangitsina ku bagore n'abagabo, amabere ku bagore	Kugira ibituruguny ku bindi bice n'amaboko, rimwe na rimwe bishobora kuvamo umufunzo	Uruhu rw'ukuguru kubyimbye rushobora guhindura ibara. Gusa kwishimigura ntibikunze kubaho
Onkoserikoze	Kugira uduturuguny dutoya cyangwa tumini ahanu hatandukanye mu mubiri	Guhinduka k'uruho rukaba nk'urwo umuserebanyu, rukaba rwagira ibibara ahanu hatandukanye.	Umuntu ashobora kugira ubuhumyi, ntabe akibona neza	Umuntu ashaka no kwishimigura. Ariko natwabo abyimba ibirenge, nta n'ubwo agira ibisebe by'umufunzo

INDWARA Z'URUHU ZITITAWeho UKO BIKWIYE- ZIGOMBA KURANDURWA MU RWANDA

Izina ry'indwara	Uburyo bwa mbere indwara igaragaramo (1)	Uburyo bwa bwa kabiri indwara igaragaramo (2)	Uburyo bwa bwa gatatu indwara igaragaramo (3)	Ibindi wayimenyaho (4)
Ibibembe	Kugira ibara rimwe cy'umufunzo yemuka cy'umufunzo, atariyashyamba, aya ukajye muri aya mubara wifashije agashyamba, ntabwo umuntu yuma ko bamukazeho, wakaze kw'ibara ritanze akumva.	Kugira igisebe, umufunzo cyangwa se ubushye bitabwira, cyane cyane mu mubiri mu birembo.	Abanyacyi bawemo na bamwe bashobora kugira uduturuguny duta (ubushyamba) ku mubiri, n'ahandi ku mubiri wese.	Ibibembe ni indwara ivurwa agashyamba igisebe mu ghe kumubiri, ugashyamba imbi ku ghe kandi cyafata neta. Ingaruka zikomeye ku bibembe nizo mbi hari gutakaza ingufu z'ibigori, ibigori, gutakaza ingufu zimwe z'umubiri n'amano cyangwa imbi.
Ibinyoro	Ibituruguny bita n'ibinyoro bitabwira	Igisebe gishobora kuva umufunzo cyangwa se kizakome amashyamba	Kugira ibibara ku mubiri ARIRO ukaba wababwirako umwe akumura akumura ku umukojeho kumira	Umuntu ashaka kwishimigura. Ariko natwabo abyimba ibirenge
Hisebama	Bishobora kuba igisebe cy'umufunzo	Bishobora kuba igisebe cy'umufunzo	Uyirwaye ashobora kubyimba ibirenge no mu ka bombombori	Ntabwo umuntu yishimigura. Nta n'ubwo agira ibibara ku mubiri
Iburuli	Igisebe cy'umufunzo	Uyirwaye ashobora kubyimba amaboko	Uyirwaye ashobora ku kugira ibibara ku kaguru	
Ibituruguny	Igisebe cy'umufunzo guturuka ku bituruguny	Kubyimba bitabwira		
Leyishimanyose y'uruho	Uduturuguny dutoya	Umuntu ashimigura cyane	Kubyimba bitabwira	
Shishikara namaze yitwa UBUNYERI				
	Uduturuguny ku ruho, impande y'amano no mu bindi bice by'umubiri	Amavunje ashobora gutakaza umuri y'ibirenge		
Amavunje				

- Piloted in 4 districts with reported Leprosy cases
- The simplified CHWs screening tools include (Podo, LF, Oncho, Scabies, Tungiasis, Leprosy, etc.)
- Trained 74 HCP (nurses and Medical Doctors)
- Trained 401 CHWs
- Screened 1,055 skin conditions (by CHWs and HCP)
- Planned scale-up in other districts



Status of NTD Data Integration in HMIS: HFs Routine Data Reporting

Rwanda HMIS

Remera (Gasabo) CS

3. Stools. Samples TOTAL

3.1 Ascaris	3.7 Giardia lamblia or intestinalis
3.2 Trichuris (Tricocephale)	3.8 Enterobius vermicularis (Oxyure)
3.3 Ankylostoma (hookworms)	3.9 Strongyloides stercolaris (Angillule)
3.4 Schistosoma in stool	3.10 Trichomonas intestinalis
3.5 Taenia (solium and saginata)	3.11 Other parasites in stools/ Autres parasites intestinaux
3.6 Entamoeba histolytica	

0

0

59

84

NTDs data element (STH, Schistosomiasis in routine services



Status of NTD Data Integration in HMIS: Disease surveillance

Rwanda Integrated Disease Surveillance

Search apps

Summary of Immediately Reportable Diseases Cases and Deaths

Cases and Deaths

Burega CS

Find

- ☐ Burera District
- ☐ Gakenke District

Filter in section

Flu syndrome

Non bloody diarrhoea under 5 years

Simple malaria

Severe pneumonia under 5 years

Brucellosis

COVID-19

Rabies exposure (Dog/mammals bite)

Trypanosomiasis

Acute hemorrhagic fever syndrome

Anthrax

Bacterial Meningitis

Chikungunya

Cholera

Dengue

Bloody Diarrhea (Shigellosis)

Dracunculiasis (Guinea Worm disease)

Epidemic Typhus

Foodborne illness

Human influenza due to a new subtype

Human influenza due to a new subtype

Human Rabies

Measles

Neonatal tetanus

Acute Flaccid Paralysis

Snake bites

Typhoid Fever

Yaws or endemic syphilis or bejel

Unknown disease/event/condition

Yellow Fever

- Routine case management and surveillance
- Disease surveillance reporting recommended by WHO
- Integrated data and quality analysis, coordination



Opportunities and Lesson Learned



- Joint planning, implementation and partners coordination
- Efficient use of resources (financial, human)
- Improved data collection and quality
- Appropriate in the budget constraints situation
- Accountability and sustainability of the intervention



Thank you